

Alexander Devine's

*Big*  
*Chick Knit*

Supporter Guide



# WHO WE ARE

Alexander Devine Children's Hospice Service is a local charity that provides specialist care and vital support to children with life-limiting and life-threatening conditions, and their families, across Berkshire and into surrounding counties.



Alexander Devine

John and Fiona Devine set up the charity in memory of their extraordinary little boy who in early 2006 sadly passed away at the age of eight from a rare brain tumour. Their personal experience, and subsequent extensive research, led them to realise there was a vital need for a local children's hospice service in Berkshire.

## VISION & AIMS

We deliver palliative care to children and families through a holistic approach that meets the individual needs of each child and their family.

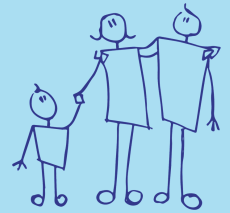
Our vision is to provide a children's hospice service within Berkshire and into surrounding counties that will give children and families a choice of care and support from a skilled and dedicated team.

## OUR MISSION

Reaching out to every child and family that needs us, offering support and care from people who understand



165+



children and families currently supported by Alexander Devine



1,370+

children in Berkshire alone with life-limiting conditions and research shows that this number is likely to increase by a further 11% by 2030



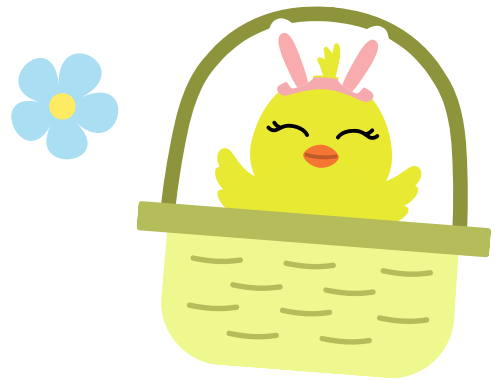
“ Alexander Devine stepped in and made such an unforgettable impact on our lives



# ABOUT THE BIG CHICK KNIT

We are so EGG-cited that Spring is almost here, which also means the launch of our Big Chick Knit campaign!

Each year, incredible knitters and crafters from across our local area make knitted chicks and friends, each with a chocolate egg inside. This year, we are taking these chicks to new heights and are aiming to get all of Berkshire involved!



## So, how does it work?

1

Amazing knitters and crafters get their needles together to knit or crochet as many chicks and friends as possible. These adorable knits are the heart and most important part of our campaign!



We appeal to local businesses, community groups and schools to donate Crème Eggs to our campaign or generously host a Crème Egg collection point, gathering as many Crème Eggs as possible to stuff in each chick.

2

3

When it's time to let the chicks fly the nest! We provide boxes for groups or volunteers to sell across Berkshire, we sell the chicks on our website or attend local events to find each chick a new home and raise the vital funds needed for our charity.



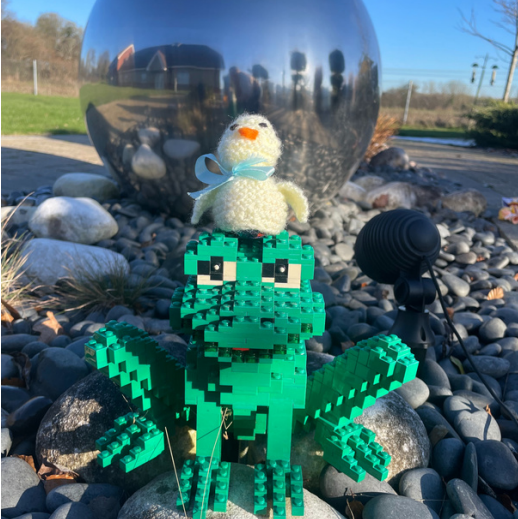
## Each chick is sold for £3!

And 100% of the money raised from these adorable knitted friends goes directly to our charity, making a huge difference to the children and families we support!








# KNIT OR CROCHET FOR US



Put your needles or hooks together and knit as many little chicks as you can manage!

We have knitting or crochet patterns you can follow. All patterns are available on our website or at the end of this pack.

Some things to consider when knitting your chicks:

-  Each knit needs to be able to fit a Crème Egg or similar inside.
-  Knits can be as colourful as you please: the quirkier, the better!
-  You can accessorise your knits if you wish with scarves, hats, jewellery, etc.

If you fancy something different, then why not try out the pattern for a bunny instead, or if you have any knitting ideas please let us know! We would love to hear them.

You can post your finished chicks to:

**Fundraising Office, Alexander Devine  
Children's Hospice Service, Snowball  
Hill, Maidenhead, Berkshire, SL6 3LU**



**Please make sure we receive your finished chicks by 26th February 2024!**

As an alternative, we are always overwhelmed by the kindness of our supporters who go the extra mile by filling their own chicks and selling them to friends, family, colleagues, or at events and places in their neighbourhood, etc.

Get in touch with our fundraising team to let us know if you plan to do this by emailing [fundraising@alexanderdevine.org](mailto:fundraising@alexanderdevine.org)



# VOLUNTEERING OPPORTUNITIES

We are so grateful for any time and support you can spare for our Big Chick Knit. If you would like to get more hands on, we are looking for a variety of volunteering roles to support our Big Chick Knit.

## Egg Taxi Drivers

We need 'Egg Taxi' volunteers to pick up eggs in their area, kindly donated by companies, schools and other organisations, and then drop them off at our children's hospice in Maidenhead.



## Egg Filling

Filling thousands of chicks isn't an easy task! We need volunteers to fill and prep chicks in the run up to Easter. We can arrange 'filling sessions' at our hospice, or at a group near you to 'get stuffing'!



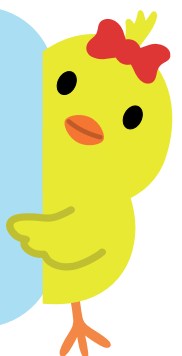
## Chick Hospital

Unfortunately, some chicks we receive need a few repairs from their travels. Our chick hospital needs volunteers to stitch our chicks back to good health either at our children's hospice in Maidenhead or at home - sewing skills will be needed!



## Chick Deliveries

As well as picking up eggs, we need volunteers to deliver boxes of ready-to-go chicks from our hospice to venues all across Berkshire. If you have a venue near you that you think would be a perfect place for our chicks, please let us know!



If you are interested in any of the other opportunities from the list above, or want to get involved in another way, please don't hesitate to get in touch with our Fundraising Team:

 [fundraising@alexanderdevine.org](mailto:fundraising@alexanderdevine.org)

 01628 822777





# CHOCOLATE EGG COLLECTING






We need hundreds of Creme Eggs to fill each knitted chick and friend for our campaign. If you would like to donate Creme Eggs to support our efforts, you can buy them from our Amazon Wishlist here.

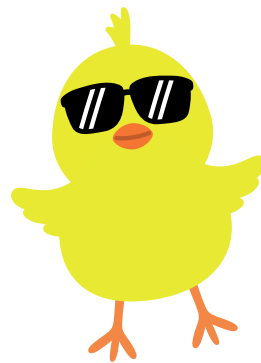
Alternatively, we need places across our local community to host Creme Egg Collection Points where the general public can contribute to the campaign. If you know of any groups or places that would be ideal for a Crème Egg collection point, such as your local library, coffee shops, community centres or in your office, please let us know!

You can download our Creme Egg Collection Point poster at the end of this pack, or to find out more email:

[fundraising@alexanderdevine.org](mailto:fundraising@alexanderdevine.org)

We accept various types of chocolate eggs, including:

-  Cadbury's Creme Egg
-  Cadbury's Oreo Egg
-  Cadbury's Caramel Egg
-  Reese's Peanut Butter Creme Egg
-  Hershey's Cookies 'N' Cream Egg



Each 50p\* Creme Egg is worth a £3 donation to our charity!



5 Creme Eggs

could help provide a memory box for a bereaved family, full of things to treasure forever.



35 Creme Eggs

could pay for a Splash session in our hydrotherapy pool, time for a family to come together and have fun.



143 Creme Eggs

would fund a day at the hospice for a child with a life-limiting or life-threatening condition, giving them the opportunities for fun and play as well as specialist care.



Alexander Devine  
Children's Hospice Service



# BUY OR SELL



It's time to let the chicks fly the nest!

Our knitted chicks and other adorable friends will be available to buy on our website from **March 1st 2024**. They make the perfect gift for a loved one or a special chocolatey treat for yourself!

Buy your knitted chicks, bunnies and other adorable friends at: [www.alexanderdevine.org/chicks](http://www.alexanderdevine.org/chicks)

100% of each sale goes directly to our charity, helping us to be there for every child and family that needs us.

## Host a box of knitted friends



We need places in the community to host a box of knitted friends to sell and help our chicks fly the nest! Schools, offices and libraries make perfect places to host these boxes - if you have a place near you please let us know.

Alternatively, if you would like a box to sell to your friends, family or colleagues we would love to hear from you!

Each box holds up to 20 chicks, worth £60 to our charity! We will provide you with the box with a scannable QR Code for payments, plenty of chicks and a collection can making it super easy to put on a countertop, desk or till.

You can also download the poster at the end of this pack to display with your box to let everyone know how they can support The Big Chick Knit.

Request your box by emailing our fundraising team at:

[fundraising@alexanderdevine.org](mailto:fundraising@alexanderdevine.org)





# LET'S GET CRACKING!



We can't wait for you to be part of The Big Chick Knit and are so grateful for your incredible support. With your help, we can create a Spring of Smiles for all of the children and families that our service supports!

Make sure to let us know of your plans and how you wish to support our knitting festivities. You can reach out to us at:

 [fundraising@alexanderdevine.org](mailto:fundraising@alexanderdevine.org)

 01628 822777



## Don't forget to share on Social Media!

We would love to see all of your knitted creations, Creme Egg collections or fundraising activities online. Make sure to tag us in your posts and use the hashtag: **#BigChickKnit**

 **Alexander Devine Children's Hospice Service**

 **alexanderdevinehospice**

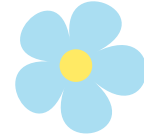
 **Alexander Devine Children's Hospice Service**







# Easter Chick Knitting Pattern



## You will need:

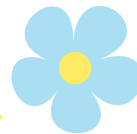
Any colour double knit wool  Pair of needles UK Size 11 (3mm)  
Cotton wool ball/toy stuffing  Black felt/thread for eyes  
Orange felt  Coloured ribbon  Creme Egg



1. Cast on 20 sts.
2. Knit 1 row.
3. Inc in 1st st, k8, inc into next 2sts, knit to end (23sts).
4. Inc in 1st st, k9, inc into next 2 sts, knit to end (26sts).
5. Inc in 1st st, k11, inc into next 2 sts, knit to end (29sts).
6. Inc 1 st at the beginning of every row until 42 sts are on the needle.
7. Cast off 11 sts at the beginning of next 2 rows (20sts).
8. Increase 1 st at the beginning of the next 4 rows (24 sts).
9. Knit 4 rows.

10. K2, then k2tog to last 2 sts, k2 (14sts).
11. Knit 4 rows.
12. K2, then k2tog to last 2sts, k2 (9sts).
13. Draw wool through rem 9 sts and pull tight.
14. With that piece of wool, sew round the edge of work to beg st leaving the cast on edge open so that the egg can be inserted.
15. Stuff the head with a cotton wool ball, sew around the neck and gather in.
16. Sew 2 eyes with fine black wool and stick or sew a small diamond shaped piece of orange felt for the beak.
17. Tie a thin piece of ribbon around the neck in a bow.
18. Insert egg and check it doesn't drop out when held by head. Add extra stitches to tighten if required.

Send your finished chicks to the below address marking your parcel 'Easter Chicks'.  
Alexander Devine Children's Hospice Service,  
Snowball Hill, Maidenhead, SL6 3LU.



For more information email [fundraising@alexanderdevine.org](mailto:fundraising@alexanderdevine.org)  
or call 01628 822777

Please complete this tear off slip and enclose in your parcel.

Name: \_\_\_\_\_

No. of chicks/bunnies enclosed: \_\_\_\_\_

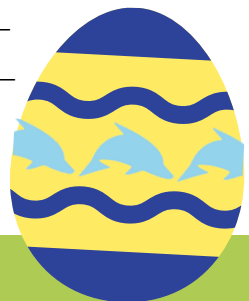
Email: \_\_\_\_\_

Address: \_\_\_\_\_

How did you first hear about the Spring Appeal? \_\_\_\_\_

We would love to stay in touch with you to let you know how your donation helps support the children and their families that we care for.

Please tick this box if you would like to sign up to our newsletter





# Easter Bunny Knitting Pattern



## You will need:

- Double knitting wool
- Pair of UK size 11 needles (3mm)
- Black thread for eyes, nose and mouth
- Length of wool for tail
- Cotton wool ball or toy filling
- Coloured ribbon



1. Cast on 21 sts.
2. Knit 1 row.
3. Inc in 1st st k1, repeat to the last st, inc in last st (32 sts).
4. Inc in 1st st, k14, inc in next 2 sts, k14, inc in last st (36sts).
5. Knit 10 rows.
6. K2tog at beg of next 4 rows (32sts).
7. Cast off 6sts at beg of next 2 rows (20sts).
8. Inc in 1st st at beg of next 4 rows (24sts).
9. Knit 4 rows.
10. K2, k2tog to last 2 sts, k2 (14sts).
11. Knit 4 rows.
12. K2, k2tog to last 2 sts, k2 (9sts).
13. Draw wool through remaining sts and pull tight.
14. With that piece of wool, sew round the edge of work leaving the cast on edge open for the egg to be inserted. Be sure to stitch the first cast on stitch to the last stitch to complete the circle at the bottom.
15. Check that the Creme Egg fits snugly inside the bunny. It shouldn't fall out when you pick up the bunny by the head.
16. Stuff the head with toy filling, sew around neck and gather in tight, fasten off.



1. Cast on 8 sts (leave a long length of wool to sew the ear to the head)
  2. Knit 12 rows
  3. K3, K2tog, K3 (7sts)
  4. K3, K2tog, K2 (6sts)
  5. K2, K2tog, K2 (5sts)
  6. K2, K3tog, K1 (4sts)
  7. K1, K2tog, K1 (3sts)
  8. K1, K2tog (2sts)
  9. K2 tog
  10. Fasten off, cut wool and sew in end of yarn.
  11. Fold ears in half lengthways and using the length of wool attached, sew both ears on towards the back of the head starting about 3-4 rows from the tops and meetings down centre back of head.
- TIP - Before cutting yarn from sewing on 2nd ear, sew a few stitches through both ears lengthways and pull tight. This helps to shape the bunny's head and hold ears together.*
12. Embroider nose, mouth and eyes. Slightly pulling thread between the eyes helps draw in and shape the head. Add a tail (lazy daisy flower with a French knot centre works well)
  13. Tie a ribbon around the neck.



Send your finished chicks to the below address marking your parcel 'Easter Bunnies'.  
Alexander Devine Children's Hospice Service,  
Snowball Hill, Maidenhead, SL6 3LU.



For more information email [fundraising@alexanderdevine.org](mailto:fundraising@alexanderdevine.org) or call 01628 822777

Please complete this tear off slip and enclose in your parcel.

Name: \_\_\_\_\_

No. of chicks/bunnies enclosed: \_\_\_\_\_

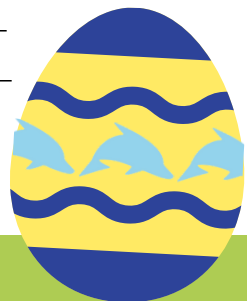
Email: \_\_\_\_\_

Address: \_\_\_\_\_

How did you first hear about the Spring Appeal? \_\_\_\_\_

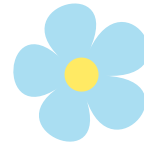
We would love to stay in touch with you to let you know how your donation helps support the children and their families that we care for.

Please tick this box if you would like to sign up to our newsletter





# Easter Chick Crochet Pattern



## You will need:

- 3.5 hook (or 2.5 if you crochet loosley) Darning needle
- Sewing needle Double knit wool (any colour)
- Black felt for eyes Orange felt for beak
- Black thread Scissors Toy stuffing
- A Creme Egg



## Head (6 rows in total)

- Row 1:** Magic ring. Into this, ch2, then 11 htr; ss to join into a circle.
- Row 2:** ch2, into first htr of row 1, do 1htr, and keep alternating 2htr, 1htr until row is completed (18 stitches in total) ss to join.
- Row 3:** ch2, 17htr, ss to join.
- Row 4:** as row 3.
- Row 5:** ch2, do 2htr together to decrease, then 1htr, then 2htr together to decrease, then 1htr, then 2htr together, then 1htr, and so on until ring meets, ss to join (18 in total, down to 12). Fill head with stuffing now.
- Row 6:** ch2. This is the first part of htr2 together to continue decreasing, of which you do 6 in total to complete head, ss to join. Leaving a long tail (to sew head and body), cut wool.

## Body

- Row 1:** Cast on, leaving long tail for sewing up. CH27 (last two form first stitch of row 2).
  - Row 2:** Htr into base of first stitch, then 1htr into each ch, until the last ch into that do 2htr.
  - Row 3:** ch2, into base of ch2, do 1htr. Then 1htr into each stitch of row until last stitch of row. Into that, do 2 htr.
  - Row 4, 5, 6, 7, 8, 9:** as before, so increasing by 2htr each row. At end of row 9, fasten off, weave in end.
- Holding horizontally, fold vertically down the centre. Sew up body, leaving room to get the egg in and out (but held firmly - you should be able to hold the chick by its head without the egg dropping out), and gather where the head will go so it's rounded. Sew head to body weaving in ends. Sew on beak and eyes.

Send your finished chicks to the below address marking your parcel 'Easter Chicks'.  
 Alexander Devine Children's Hospice Service,  
 Snowball Hill, Maidenhead, SL6 3LU.



For more information email [fundraising@alexanderdevine.org](mailto:fundraising@alexanderdevine.org) or call 01628 822777

Please complete this tear off slip and enclose in your parcel.

Name: \_\_\_\_\_

No. of chicks/bunnies enclosed: \_\_\_\_\_

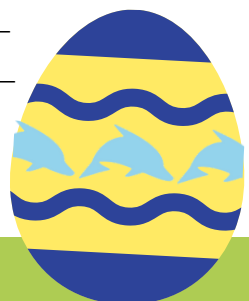
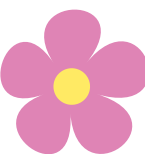
Email: \_\_\_\_\_

Address: \_\_\_\_\_

How did you first hear about the Spring Appeal? \_\_\_\_\_

We would love to stay in touch with you to let you know how your donation helps support the children and their families that we care for.

Please tick this box if you would like to sign up to our newsletter










# Easter Bunny Crochet Pattern



## You will need:

- 2.5 or 3.5 hook (smaller if you crochet loosely)
- Darning needle  Sewing needle
- Double knit wool (two colours)
- Black wool for nose and eyes  Scissors
- Toy stuffing  A Creme Egg
- Tiny pompom and white thread



## Head (6 rows in total)



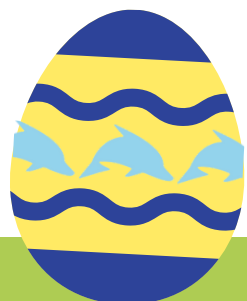
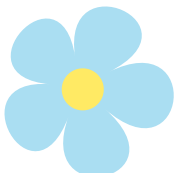
- Row 1:** Magic ring. Into this, ch2, then 11 htr; ss to join into a circle. Pull magic ring tight and weave/sew in before you go any further.
- Row 2:** ch2, into first htr of row 1, do 2htr; into 2nd htr of row 1, do 1htr, and keep alternating 2htr, 1htr until row is completed (18 stitches in total), ss to join.
- Row 3:** ch2, 17htr, ss to join.
- Row 4:** as row 3.
- Row 5:** ch2, do 2htr together to decrease, then 1htr, then 2htr together, then 1htr, and so on until ring meets, ss to join (18 in total, down to 12). Fill head with stuffing now.
- Row 6:** ch2. This is the first part of the 1st htr together to continue decreasing, of which you do 6 in total to complete head, ss to join. Leaving a long tail (to sew head and body), cut wool.

## Body



- Row 1:** Cast on, leaving long tail for sewing up. CH25 (last two form first stitch of row 2).
- Row 2:** Htr into base of first stitch, then 1htr into each ch, until the last ch: into that do 2htr.
- Row 3:** ch2, into base of ch2, do 1htr. Then 1htr into each stitch of row until last stitch of row. Into that, do 2 htr.
- Row 4, 5, 6, 7, 8:** as before, so increasing by 2htr each row. At end of row 8, fasten off, weave in end.

Holding horizontally, fold vertically down the centre. Sew up body, leaving room to get the egg in and out (but held firmly - you should be able to hold the bunny by its head without the egg dropping out), and gather where the head will go so it's rounded. Sew head to body weaving in ends. Sew on a pompom for a tail.



P.T.O



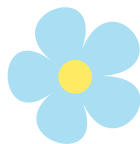
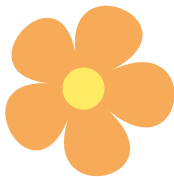
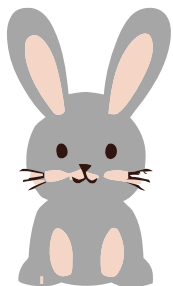
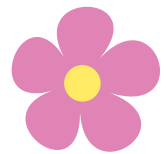
### Ears (Make 2)

- Row 1:** ss (leaving a tail 30cm max to sew with). ch8 (ch 7&8 form first stitch of row 2).
- Row 2:** htr into each of the stitches of row 1 (you should have 7 stitches).
- Row 3:** ch2. htr into base of chain2; htr into each stitch (8 in total).
- Row 4:** ch2, htr 2 together, htr the three middle stitches, htr2 together.
- Row 5:** ch2, htr 2 together, htr, htr 2 together.
- Row 6:** ch2, htr together all the stitches into a cluster, and then fasten off and weave in.

When you have made both, fold each one in half vertically and using the tail of the wool, sew the edges together to form a long, pointed ear shape. Then sew the ears to each other. Don't cut the wool, you can use it to attach the ears to the head.

### Bow Tie (essentially a tiny 5 stitch by 7 row scarf)

- Row 1:** ss, ch6 (last two chain stitches form first stitch of row 2).
- Row 2:** htr into each of chains (5 stitches in total).
- Row 3:** ch2, htr, htr, htr, htr.
- Row 4:** as row 3.
- Row 5, 6, 7:** The same. Finish off, weave in. Make a bow tie either by wrapping wool round the middle or sewing it into a ruched/gathered shape. Leave a tail; you'll need this to sew the bow tie on.



Send your finished bunnies to the below address marking your parcel 'Easter Bunnies'.  
 Alexander Devine Children's Hospice Service,  
 Snowball Hill, Maidenhead, SL6 3LU.

For more information email [fundraising@alexanderdevine.org](mailto:fundraising@alexanderdevine.org) or call 01628 822777

Please complete this tear off slip and enclose in your parcel.

Name: \_\_\_\_\_

No. of chicks/bunnies enclosed: \_\_\_\_\_

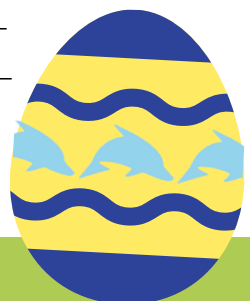
Email: \_\_\_\_\_

Address: \_\_\_\_\_

How did you first hear about the Spring Appeal? \_\_\_\_\_

We would love to stay in touch with you to let you know how your donation helps support the children and their families that we care for.

Please tick this box if you would like to sign up to our newsletter



# Creame Egg Collection Point

Each Creame Egg is worth a £3 donation to your local children's hospice and will help create smiles this Spring



**in aid of**  
  
**Alexander  
Devine**  
Children's Hospice  
Service





# Knitted chicks

Each knitted friend has a chocolate egg inside!

£3 minimum donation

100% of each donation supports Alexander Devine Children's Hospice Service

